




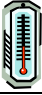

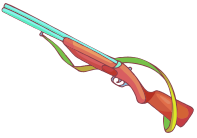


Handout of Solid Waste Resources May 2006

An electronic version of this handout can be found at www.zender-engr.net/handout.htm

RECYCLING	
<p>Ink Jet, Fax, and Laser Toner cartridges.</p> 	<p>Go to http://www.ccthita-swan.org/main/toner.cfm for full list of companies, or 1 800-368-5881 for ECCO, a Washington company. Companies will send you free envelopes and then send a check when they receive the cartridges. Prices vary depending on the type of cartridge, and you can shop around for the best deal.</p>
<p>Lead-acid batteries (vehicle batteries)</p> 	<p>To calculate how many lead-acid batteries you need to backhaul http://www.zender-engr.net/battery.htm, see "Counting your battery wastestream. For step by step backhaul instructions, see: Recycling lead-acid batteries.</p>
<p>Computers, miscellaneous E-waste, cell phones, etc.</p> 	<p>http://www.ccthita-swan.org/pdf/ewaste.pdf or Call Larry Zirkle at Total Reclaim in Anchorage, 229-0183. He is very knowledgeable and will help you get started. Bill Burnard at Bethel Recycling also ships E-wastes to Larry or Seattle. Call Bill at 543-7072</p>
<p>Fluorescent Lights</p> 	<p>http://www.ccthita-swan.org/pdf/fluorescent.pdf or Call Larry Zirkle at Total Reclaim in Anchorage, 229-0183. He is very knowledgeable and will help you get started.</p>
<p>Household batteries</p> 	<p>Go to http://www.zender-engr.net/battery.htm. "What to do with household batteries" at http://www.zender-engr.net/docs/battery_household.pdf gives information on starting a program, where to send the batteries, and information on other sources of mercury and lead. A battery identification and hazard table, called "Household battery summary" AT http://www.zender-engr.net/docs/battery_table.pdf shows pictures of the batteries.</p>
<p>Miscellaneous recycling of non-haz wastes</p>	<p>http://www.ccthita-swan.org/main/recycling.cfm http://www.ccthita-swan.org/Planning/2D_recycle.cfm</p>
MERCURY AND LEAD INFORMATION	
<p>Mercury Removing & identifying household sources, handling & shipping it.</p> 	<p>Go to Mercury section, page 5-8 at http://www.zender-engr.net/docs/battery_household.pdf</p>
<p>Lead sinker alternatives and information</p> 	<p>http://www.zender-engr.net/docs/battery_household.pdf http://www.cws-scf.ec.gc.ca/flf-ppsp/ and http://www.moea.state.mn.us/reduce/sinkers.cfm for lead sinker and jig alternatives. Steel shot is widely available, search for steel shot on the internet. The following sites have information about the effects of lead shot:</p>
<p>Lead shot info</p> 	<p>Good and simple comparison between steel and lead shot use for hunters: http://www.gunnersden.com/index.htm.steelvslead.html Case Study of a loon dying of lead poisoning in YK Delta: http://mercury.bio.uaf.edu/~heather_wilson/Lead%20Posioning%20in%20a%20Pacific%20Loon/index.htm Many Villages have held steel shot clinics. Ask about ADFG Steel shot clinics: (907) 443-2271, or USFWS clinics; 543-3151, yukondelta@fws.gov</p>

SOLID WASTE FUNDING



<http://www.ccthita-swan.org/funding/funding.cfm> Upcoming soon are Alaska multi-media grants and ANHB mini-grants. These are both good grants for Tribes with high priority solid waste health and environmental problems. Contact Tami Fordham 271-1484 for multi-media announcement date, Ed Lohr, ANTHC 743-6119 or 562-6006 (ANHB).

BURNING

Regular trash

Chemicals contained, what to do as alternative, health risks, tips on safer emissions
http://www.ccthita-swan.org/pdf/open_burning.pdf

Burning, general tips

http://www.ccthita-swan.org/pdf/burning_wastes.pdf

Burnboxes,
incinerators



http://www.ccthita-swan.org/Planning/2C_burning.cfm, Click on Burnbarrels or Burnboxes or Incinerators for information on design, purchase, operation, cost information.

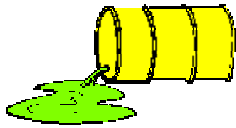
Burnbox comparison: <http://www.zender-engr.net/docs/Burnbox.pdf>

WASTE ANALYSIS



Materials on how to develop wastestream numbers.
Go to: <http://www.zender-engr.net/wastecount.htm>

HAZARDOUS WASTES



General info on training, identification, starting a program. Go to: http://www.ccthita-swan.org/Tutorials/haz_wastes.cfm ,

http://www.ccthita-swan.org/pdf/household_haz%20feb05.pdf Storing, shipping hazardous wastes, go to: http://www.ccthita-swan.org/Planning/haz_wastes.cfm

SHARE SHED/ THRIFT STORE/RECYCLE CENTER



To see village thrift store/recycle facilities:

http://www.zender-engr.net/docs/workshop_tour_1.pdf ,

<http://www.ccthita-swan.org/main/reuse.cfm#thriftstore>,

household haz waste exchange with sample sign-in sheet:

http://www.ccthita-swan.org/pdf/household_haz%20feb05.pdf

HOUSEHOLD HAZARDOUS ALTERNATIVES AND I.D.



http://www.ccthita-swan.org/pdf/household_haz%20feb05.pdf ,

Some more home cleaning recipes:

<http://www.ces.ncsu.edu/depts/fcs/housing/pubs/fcs3682r.html> , For a simple tour through a house's hazardous products and identifying alternatives (a great site!):

<http://www.chechnet.org/healthhouse/virtualhouse/index.asp>

BALERS FOR RECYCLING



Photo source: DEC

Go to http://www.ccthita-swan.org/Tutorials/baler_recycle.cfm for companies that sell balers and examples of communities that use balers for recyclables.

SOME GENERAL FREE SWM ASSISTANCE/ RESOURCES IN ALASKA, NW Alaska

SWAN www.ccthita-swan.org, Joe Sarcone, USEPA 271-1316, ITEP (Planning and resources) Jennifer Williams 347-2163, ANHB SW coordinator 565-6006, ADEC Doug Buteyn 451-2135 or Linda Demientieff 451-2174, Electronics Backhaul and Freon training: Larry Zirkle, Total Reclaim owner, 229-0183, Lynn Zender or Simone Sebalo, Zender Environmental (Free asst. for quick answers, contracted for some extended free village tech assistance through different programs) 277-2111, Ernie Hyatt, Kotzebue Landfill, 442-2105, Yukon Inter-Tribal Watershed, Jon Waterhouse 258-3337.